



Fühlhebelmessgeräte
Test Indicators

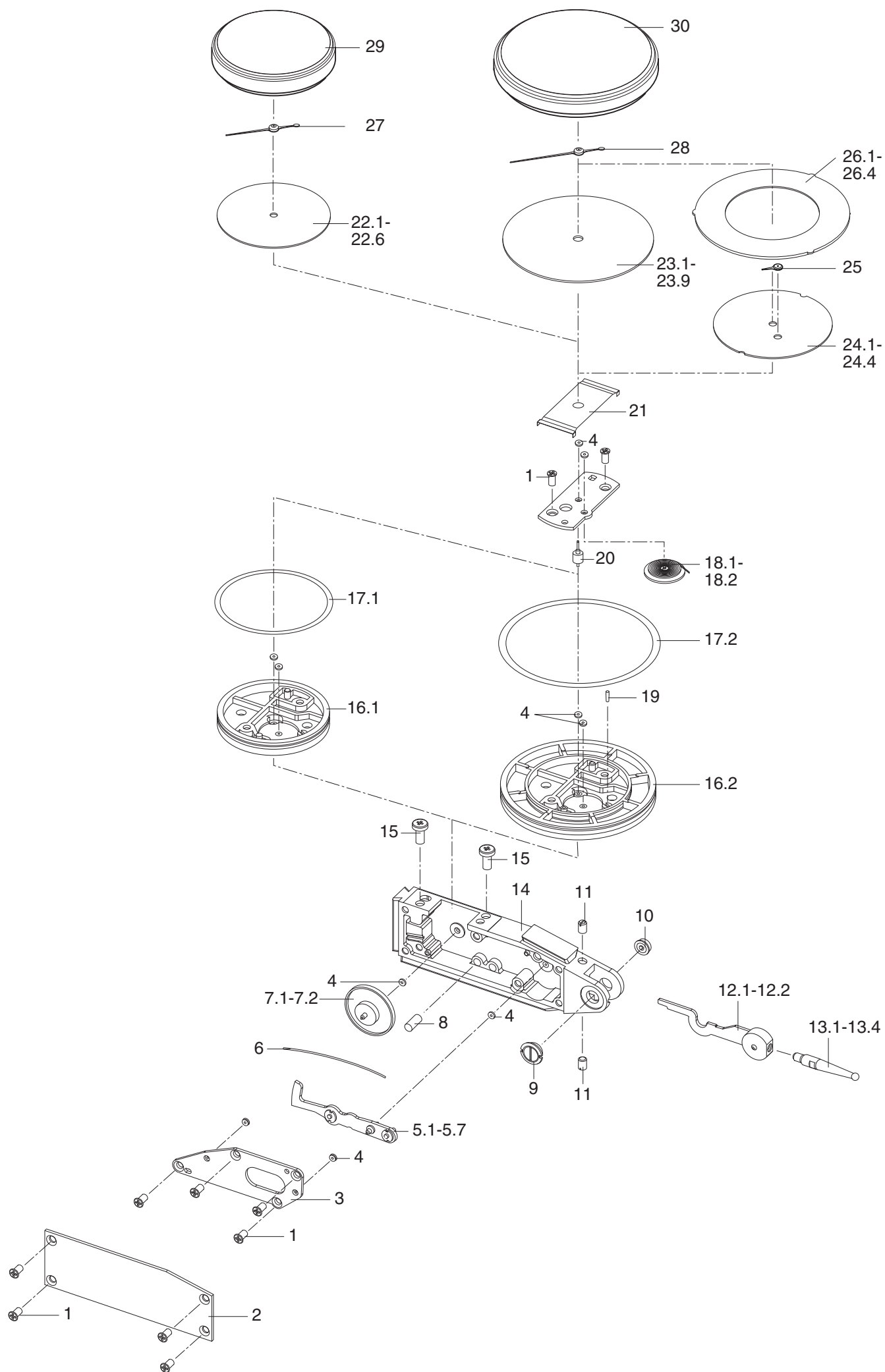
MarTest

800 S, 800 SG, 800 SA, 800 SGA
801 S1, 801 S, 801 SG, 801 SGI
800 SM, 800 SGM, 800 SGE
801 SM, 801 SGM, 801 SGE
800 SL, 800 SGL, 800 SGB
801 SL, 801 SGL

Ersatzteile
Spare Parts

3756905

Mahr GmbH Esslingen
Postfach 10 02 54 • D-73702 Esslingen
Telefon (0711) 93 12 - 600 • Telefax (0711) 93 12 - 725



Pos.-Nr. Pos.-No.	für Fühlhebelmessgerät for Test Indicator	Teil.-Nr. Part-No.	Anzahl Quantity	Benennung	Description
1	alle Modelle/ all models	4305805	10	Schraube D1,6x3,5	Screw D 1,6x3,5
2	alle Modelle/ all models	4305853	1	Deckel	Cover
3	alle Modelle/ all models	4305825	1	Platine, kpl. inkl. 4	Plate, complete incl. Pos. 4
4	alle Modelle/ all models	4305803	8	Lochstein D=0,4	Jewel bearing D=0,4
5.1	800S(G)	4305815	1	Zahnsegmenthebel w1	Gear segment lever w1
5.2	800SR	4307815	1	Zahnsegmenthebel w2	Gear segment lever w2
5.3	800S(G)L/ 800S(G)M 800SRM/ 800SGE	4306815	1	Zahnsegmenthebel x1	Gear segment lever x1
5.4	801S(G)L/ 800S(G)M 801SRM/ 801SGE	4306817	1	Zahnsegmenthebel x2	Gear segment lever x2
5.5	801S(G)/800S1/ 801SGI	4305829	1	Zahnsegmenthebel y1	Gear segment lever y1
5.6	801SR	4307816	1	Zahnsegmenthebel y2	Gear segment lever y2
5.7	800S(G)A/ 800SGB	4301815	1	Zahnsegmenthebel z	Gear segment lever z
6	alle Modelle/ all models	4305852	1	Stabfeder 30 mm	Tension spring 30 mm
7.1	800S/ 800SG/ 800SR 800SA/ 800SGA/ 800SGB	4305820	1	Kronenrad, kpl.	Intermediate drive, complete
7.2	800SL/ 800SGL/ 800SM 800SGM/ 800SRM/ 800SGE	4306820	1	Kronenrad, kpl.	Intermediate drive, complete
8	alle Modelle/ all models	4305854	1	Anschlagpuffer	Stop
9	alle Modelle/ all models	4305851	1	Lagerschraube kpl.	Bearing screw
10	alle Modelle/ all models	4305802	1	Lager	Bearing
11	alle Modelle/ all models	4305807	2	Gewindestift M2x3	Threaded pin
12.1	800S/ 801S 801S1/ 800SL/ 801SL 800SM/ 801SM/ 800SG 800SGA/ 800SR/ 800SGM 800SGE/ 801SG/ 801SGI 801SGM/ 801SGE	4305810	1	Doppelhebel, kpl.	Double lever with pivot
12.2	800SR/ 800SGB/ 800SRM 800SA/ 800SGA/ 801SR 801SRM	4307810	1	Doppelhebel, kpl.	Double lever with pivot
13.1	800S(G)/ 800S(G)A 800S(G)M/ 800SRM 800SR/ 801S(G)/ 801S1 801SGI/ 801SRM/ 801SGE	4305850	1	Messeinsatz 800 ts d=2 mm	Contact point 800 ts d=2 mm
13.2	800SGE	4308850	1	Messeinsatz 800 te d=2 mm	Contact point 800 te d=2 mm
13.3	800S(G)L/801S(G)L	4306850	1	Messeinsatz 800 tl d=2 mm	Contact point 800 tl d=2 mm
13.4	800SGB	4301850	1	Messeinsatz 800 tb d=2 mm	Contact point 800 tb d=2 mm
14	alle Modelle/ all models	4305800	1	Gehäuse kpl. inkl. 4,10	Housing compl. incl. 4, 10
15	alle Modelle/ all models	4305806	1	Schraube M2x5	Screw M2x5
16.1	800S/ 800SA 801S/ 801S1 800SL/ 801SL 800SM/ 801SM	4305831	1	Zeigergehäuse, klein	Pointer housing, small
16.2	800SG/ 800SGA 800SR/ 800SRM 800SGM/ 800SGE 801SG/ 801SGI 801SR/ 801SRM 801SGM/ 801SGE	4307831	1	Zeigergehäuse, groß	Pointer housing, large
17.1	800S/ 800 SA 801S/ 801S1 800SL/ 801SL 800SM/ 801SM	4305804	1	O-Ring für Zeigergehäuse, klein	O-ring for pointer housing, small
17.2	800SG/ 800SGA 800SR/ 800SRM 800SGM/ 800SGE 801SG/ 801SGI 801SR/ 801SRM 801SGM/ 801SGE	4307804	1	O-Ring für Zeigergehäuse, groß	O-ring for pointer housing, large
18.1	800S/ 800SA 801S/ 801S1 800SL/ 801SL 800SM/ 801SM 800SG/ 800SGA 800SGM/ 800SGE 801SG/ 801SGI 801SGM/ 801SGE	4305840	1	Federrad, kpl.	Hair spring, complete
18.2	800SR/ 800SRM 801SR/ 801SRM	4307840	1	Federrad, kpl. ,lange Achse	Hair spring, complete, long axe

Pos.-Nr. Pos.-No.	für Fühlhebelmessgerät for Test Indicator	Teil.-Nr. Part-No.	Anzahl Quantity	Benennung	Description
19	alle Modelle/ all models	4305833	1	Kegelstift	Taper pin
20	alle Modelle/ all models	4305832	1	Zeigerritzel	Pointer pinion
21	alle Modelle/ all models	4305857	1	Blattfeder	Flat spring
22.1	800S	4305855	1	Zifferblatt, klein	Dial, small
22.2	800SL/ 800SA	4306855	1	Zifferblatt, klein	Dial, small
22.3	800SM	4308856	1	Zifferblatt, klein	Dial, small
22.4	801S	4305859	1	Zifferblatt, klein	Dial, small
22.5	801S1	4305858	1	Zifferblatt, klein	Dial, small
22.6	801SL	4306817	1	Zifferblatt, klein	Dial, small
23.1	800SG	4307855	1	Zifferblatt, groß	Dial, large
23.2	800SGL/ 800SGA	4306856	1	Zifferblatt, groß	Dial, large
23.3	800SGM	4308855	1	Zifferblatt, groß	Dial, large
23.4	800SGE	4308857	1	Zifferblatt, groß	Dial, large
23.5	801SG	4307859	1	Zifferblatt, groß	Dial, large
23.6	801SGI	4307860	1	Zifferblatt, groß	Dial, large
23.7	801SGL	4306858	1	Zifferblatt, groß	Dial, large
23.8	801SGM	4308858	1	Zifferblatt, groß	Dial, large
23.9	801SGE	4308854	1	Zifferblatt, groß	Dial, large
24.1	800SR	4307818	1	Grundblatt	Bottom dial
24.2	800SRM	4308818	1	Grundblatt	Bottom dial
24.3	801SR	4307838	1	Grundblatt	Bottom dial
24.4	801SRM	4308838	1	Grundblatt	Bottom dial
25	800SR/ 800SRM 801SR/ 801SRM	4307821	1	Umdrehungszeiger	Revolution pointer
26.1	800SR	4307819	1	Skalenring	Bezel
26.2	800SRM	4308819	1	Skalenring	Bezel
26.3	801SR	4307839	1	Skalenring	Bezel
26.4	801SRM	4308839	1	Skalenring	Bezel
27	800S/ 800SA 801S/ 801S1 800SL/ 801SL 800SM/ 801SM	4305856	1	Zeiger, kurz	Pointer, short
28	800SG/ 800SGA/ 800SGE 800SR/ 800SRM 801SG/ 801SGI 801SR/ 801SRM 801SGM/ 801SGE	4307856	1	Zeiger, lang	Pointer, long
29	800S/ 800SA 801S/ 801S1 800SL/ 801SL 800SM/ 801SM	4305845	1	Glasreif, klein	Glass cover, small
30	800SG/ 800SGA/ 800SGE 800SGL/ 800SR/ 800SRM 801SG/ 801SGI/ 801SGL 801SR/ 801SRM 801SGM/ 801SGE	4307845	1	Glasreif, groß	Glass cover, large