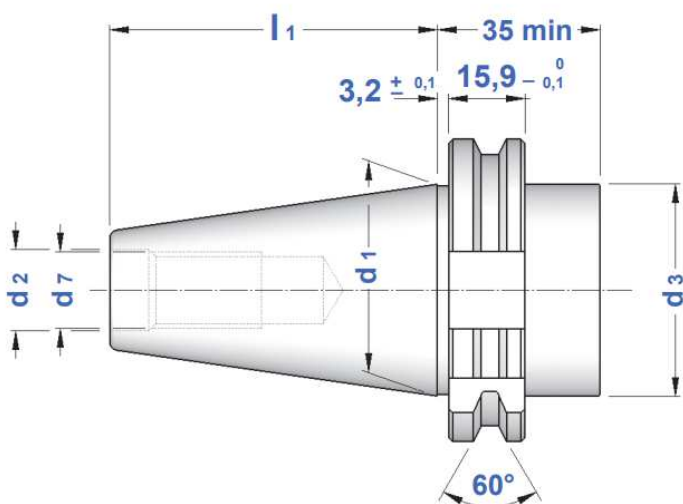
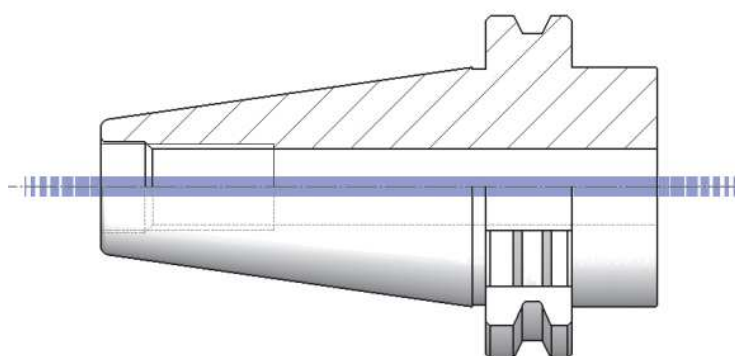
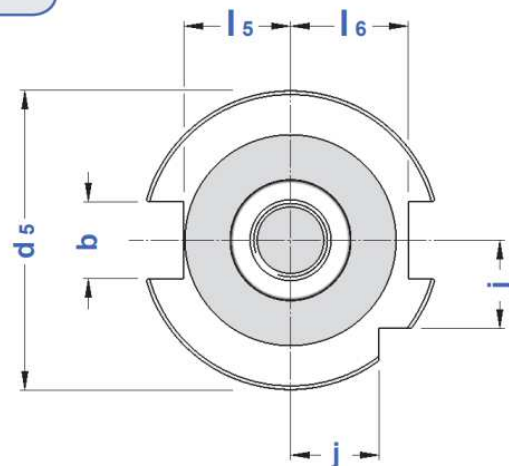


CARATTERISTICHE TECNICHE CONI DIN 69871 (ISO 7388-1)

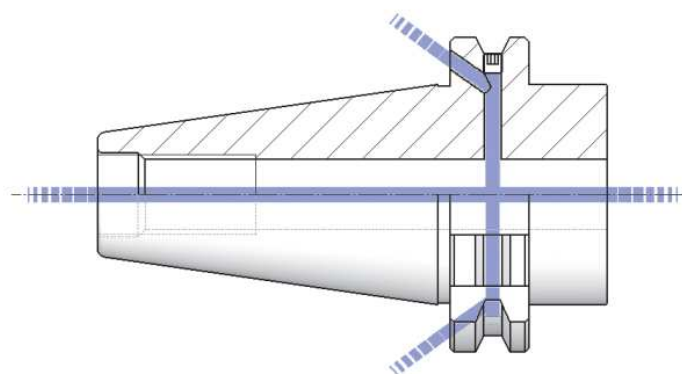
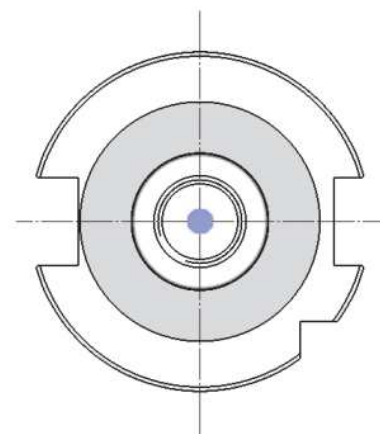
SK TAPERS DIN 69871 (ISO 7388-1) STANDARD FEATURES



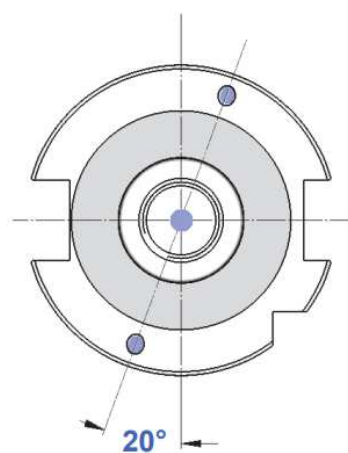
**FORMA
A**



**FORMA
AD**



**FORMA
AD+B
(AD/AF)**



CONO	b	d1	d2	d3	d5	d7	j	l1	l5	l6	PRECISIONE
SK 30 = TC 30	16,1	31,75	13	45	50	M 12	15	47,8	16,3	18,8	 
SK 40 = TC 40	16,1	44,45	17	50	63,55	M 16	18,5	68,4	22,7	25	
SK 45 = TC 45	19,3	57,15	21	63	82,55	M 20	24	82,7	29,1	31,3	
SK 50 = TC 50	25,7	69,85	25	80	97,50	M 24	30	101,75	35,5	37,7	